




A345/18 Bonar St, Arncliffe, NSW 2205

Sold - \$773,000

Apartment 2  2  1 



SOLD BY JIMMY ZHOU 0410 325 888

Great opportunity to purchase this 2 bedroom plus study apartment at FUSION complex, spacious floor plan with North aspect and large balcony. Study is approx 10sqm and can be used as 3rd bedroom. Features include 2 bedroom, 2 bathrooms, ensuite, all bedrooms have built-ins, open plan kitchen with caesar stone bench tops, gas cooking, dishwasher and stainless steel appliances, air-conditioning plus 1 security car space and locked up storage. Complex offers indoor swimming pool, sauna and gym. Close to Arncliffe and Turrella train station and Woolworth Super Market. Strata approx \$1300 p/q, water \$171p/q and council \$271p/q.

Open for Inspection

By Appointment.

Listed By



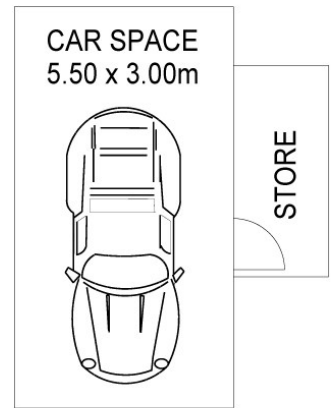
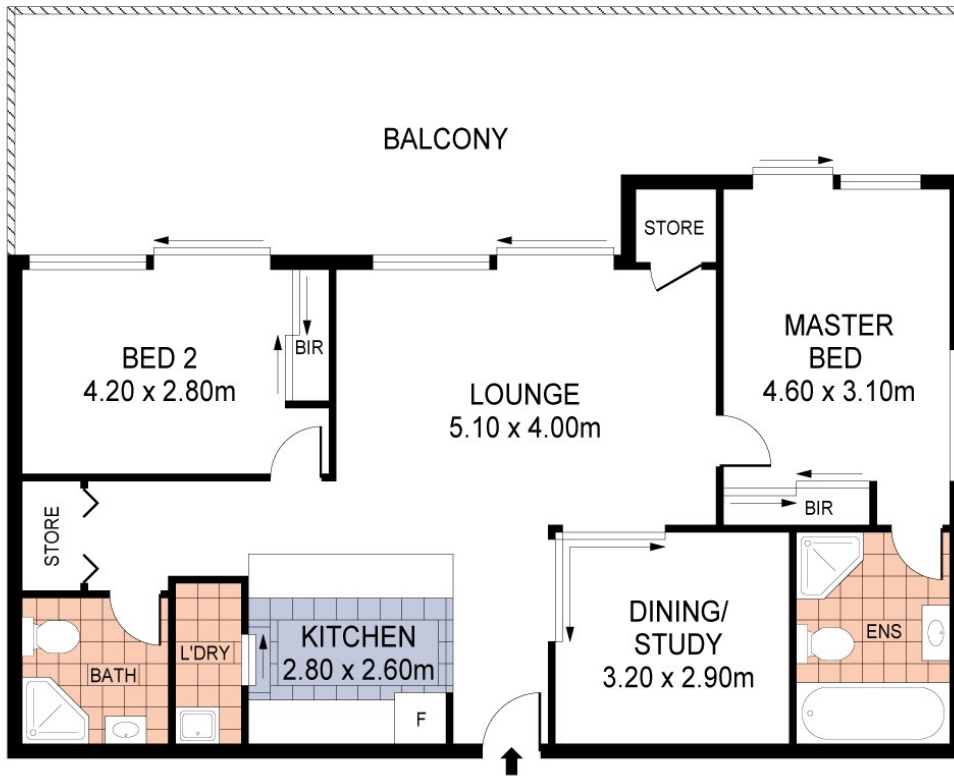
Jimmy Zhou
 Phone: (02) 9599 8145
 Mobile: 0410 325 888



Ci Song (Tim)
 Phone: (02) 9599 8145
 Mobile: 0410 263 338



Floorplan



INTERNAL AREA = 87SQM
 BALCONY AREA = 38SQM
 CAR SPACE AREA = 17SQM
 STORE AREA = 4SQM
 TOTAL AREA = 146SQM

345/5 LOFTUS ST, TURRELLA

Disclaimer; Please note that while the information contained in this floor plan is provided by reliable sources, we cannot guarantee its accuracy. It is intended as a guide only. Interested parties should rely on their own enquiry. Drawing not to scale. Dimensions are approximate.

