

E305/35 Arncliffe St, Wolli Creek, NSW 2205

Sold - \$785,000

Apartment 2  2  1 



SOLD BY JIMMY ZHOU 0410 325 888

Sundrenched north facing 2 bedroom apartment on level 3 and 4 with spacious floor plan and 3 balconies. Features include 2 bedrooms, built-ins, ensuite, air-conditioning, large open plan living and separate dining area, modern kitchen with stainless steel appliances and one security car space. Complex has lap pool, gym and sauna. Short walk to new Woolworths super market and train station. Total area approx 144sqm (internal 96sqm, balcony 32sqm, car 16sqm) Strata approx. \$1684p/q, council approx. \$291p/q, water approx. \$191p/q.

**Open for Inspection**

By Appointment.

Listed By



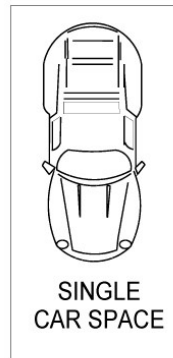
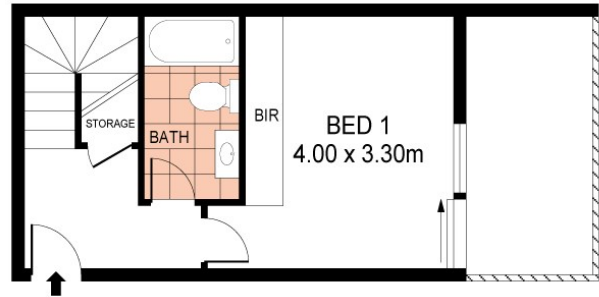
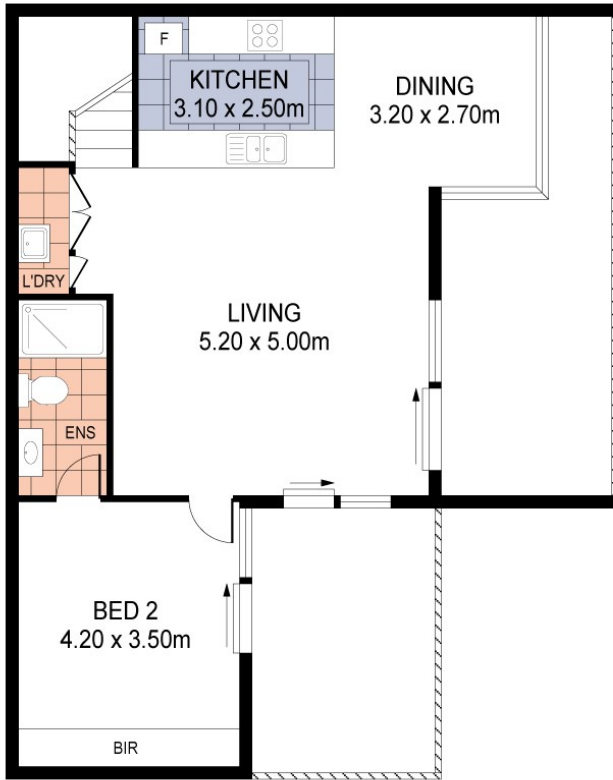
Jimmy Zhou  
Phone: (02) 9599 8145  
Mobile: 0410 325 888



Ci Song (Tim)  
Phone: (02) 9599 8145  
Mobile: 0410 263 338



Floorplan



INTERNAL AREA = 96SQM + CAR SPACE

E305, 35 ARNCLIFFE STREET, WOLLI CREEK

Disclaimer: Please note that while the information contained in this floor plan is provided by reliable sources, we cannot guarantee its accuracy. It is intended as a guide only. Interested parties should rely on their own enquiry. Drawing not to scale. Dimensions are approximate.

