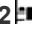




**903/24 Levey St, Wolli Creek, NSW 2205**

**Sold - \$875,000**

Apartment   



**SOLD BY JIMMY ZHOU 0410 325 888**

Designed by Spence Pearson architects and built by award winning builders Ganellen, 'Southbank' offers high end living in a tranquil park side setting. The Interiors offer a Scandinavian design with open spaces and a smart layout that functions as one. Walkways and bike paths along the Cooks River, Cahill park the rowing club and Kogarah Golf Course all surround this sun-filled apartment. CBD transport from Wolli Creek Train Station, Woolworth's and an array of cafes/restaurants are all just a moments away.

**Open for Inspection**

By Appointment.

- Prime North facing open plan living / dining area
- City, Park & Water views from living, bedroom & balcony
- Bosch stainless steel gas cook top, oven and dishwasher
- Generous bedroom w/built-in wardrobes and ceiling fan's
- Reverse cycle ducted air conditioning, lift access
- NBN ready, track lighting and video intercom system
- Rooftop terrace with BBQ, resort style pool & gym
- Security car space and storage cage on title
- Pet friendly complex, on-site management

Strata - \$1,389.45 per quarter

Water - 172.59 per quarter

Council - \$321 per quarter

**Listed By**



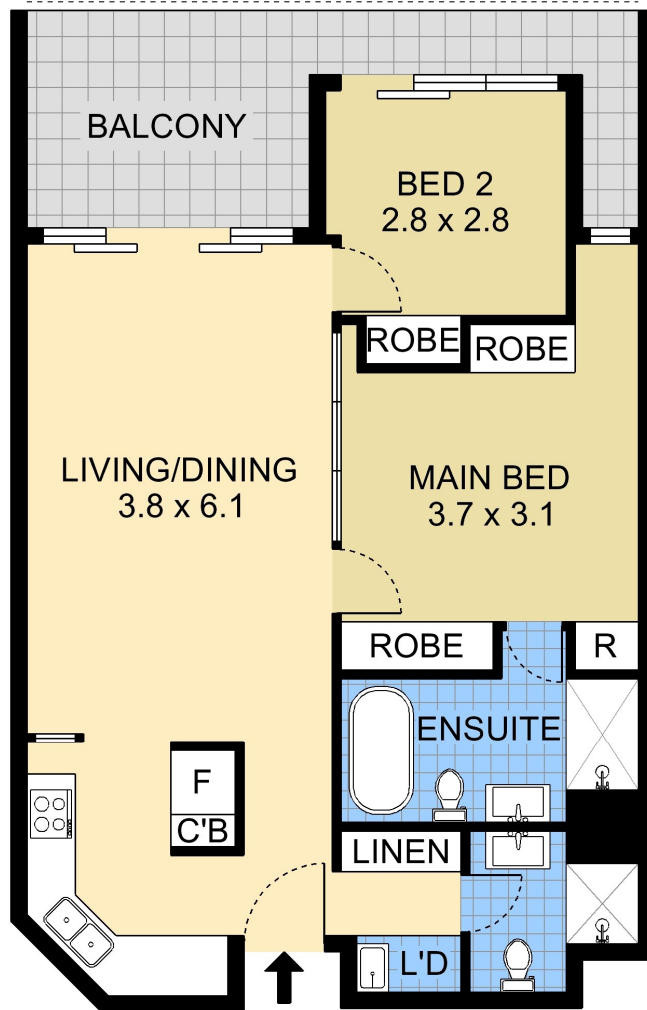
Jimmy Zhou  
 Phone: (02) 9599 8145  
 Mobile: 0410 325 888



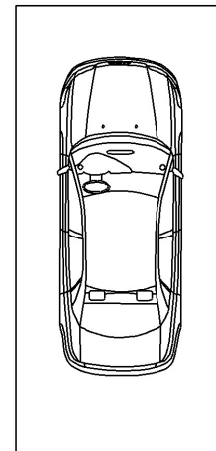
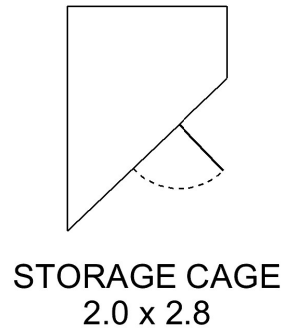
Ci Song (Tim)  
 Phone: (02) 9599 8145  
 Mobile: 0410 263 338



Floorplan



LEVEL NINE  
APARTMENT



**903/24 Levey Street, Wolli Creek**

PLEASE NOTE:  
THIS PLAN HAS BEEN PROVIDED BY EMPIRE PLANS FOR  
MARKETING PURPOSES ONLY. NO RELIANCE SHOULD  
BE PLACED ON THIS PLAN FOR CONSTRUCTION OR  
DEMOLITION PURPOSES. EMPIRE PLANS 0402 844 843