




B105/35 Arncliffe St, Wolli Creek, NSW 2205

Sold - \$620,000

Apartment 1  1  1 



SOLD BY JIMMY ZHOU 0410 325 888

This modern and spacious split level apartment with north and east aspects. Featuring private and spacious open plan living and dining area leading onto a generous courtyard, modern kitchen with gas cooking and stainless steel appliances, ensuite, air-conditioning, large bedroom with walk-in-wardrobes, internal laundry and 1 security car space. Total area is approx. 87 sqm with internal + balcony = approx 74sqm, car space approx 13sqm. Complex has swimming pool, sauna and gym. Strata approx. \$895p/q, Council approx. \$320p/q, Water approx. \$170p/q. Close to Wolli Creek train station and Woolworths super market.

Open for Inspection

By Appointment.

Listed By



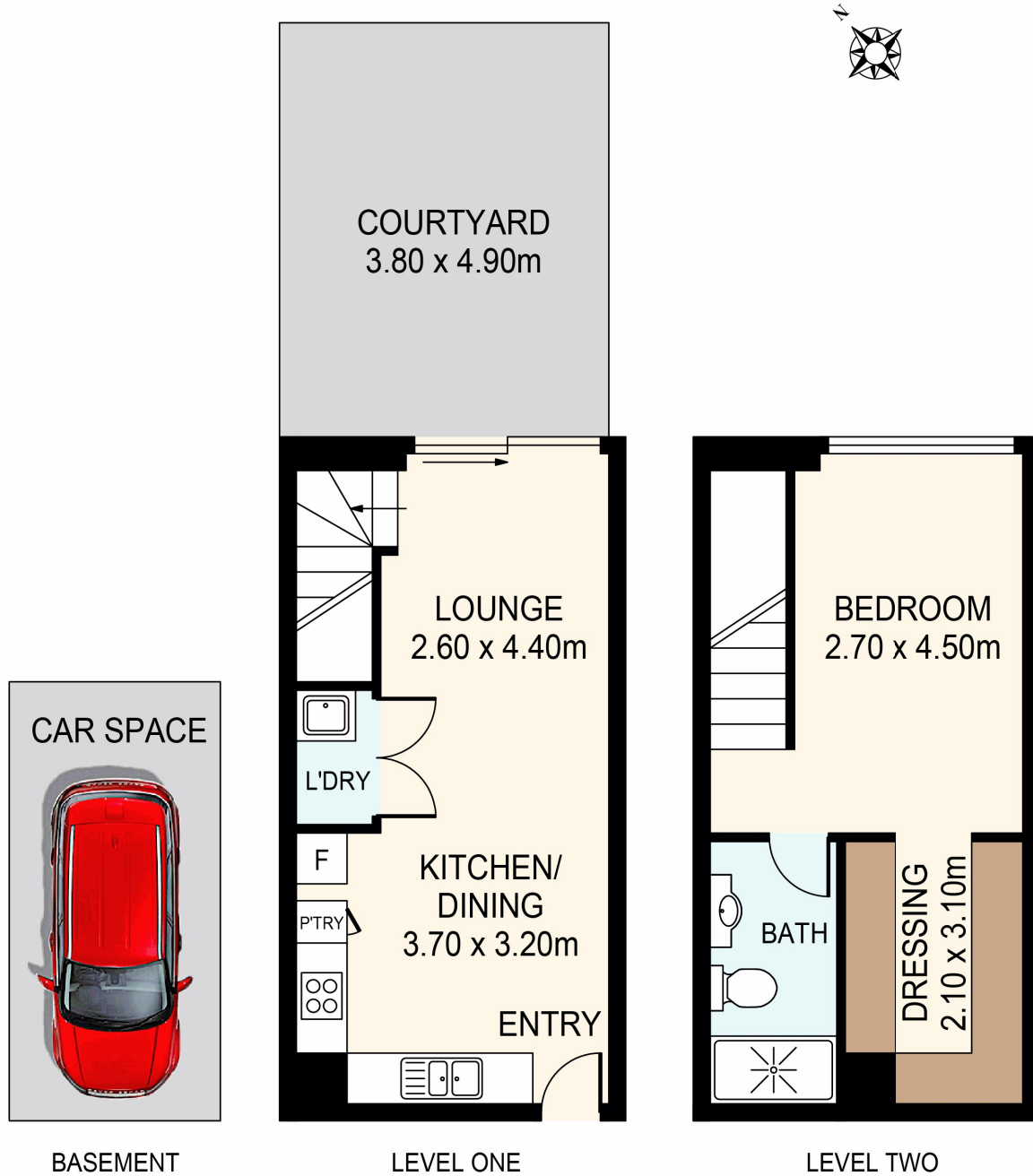
Jimmy Zhou
 Phone: (02) 9599 8145
 Mobile: 0410 325 888



Ci Song (Tim)
 Phone: (02) 9599 8145
 Mobile: 0410 263 338



Floorplan



| | |
|---|--|
| <p>DISCLAIMER: THIS IS FOR ILLUSTRATIVE PURPOSES ONLY. ALL DIMENSIONS ARE APPROXIMATE AND IT DOES NOT CONSTITUTE PART OF ANY LEGAL DOCUMENTS.</p> | <p>ADDRESS: 5/35B ARNCLIFFE STREET, WOLLI CREEK</p> |
|---|--|

FLOOR PLAN BY ARTHURAN PRODUCTIONS