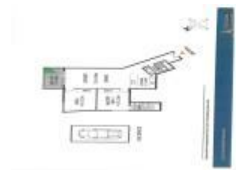


**309/10 Brodie Spark Dr, Wolli Creek, NSW 2205**

**\$790,000 - \$840,000**

Apartment 2  2  1 



**2 BEDROOM APARTMENT IN DISCOVERY POINT WITH GARDEN VIEWS**

Modern and spacious 2 bedroom apartment Located in the Verge building at "Discovery Point" with north east facing , this 2 bedroom 2 bath apartment on level 3 with garden views offering good sizes bedrooms , both bedroom with built-ins, main bedroom with ensuite, large open plan living, modern kitchen with stainless steel appliances , 1 security car space. Complex has pool and gym. Close to Wolli Creek train station and Woolworth supermarket. Internal + balcony = approx. 78 sqm, 1 car space approx. 16 sqm, Total are approx. 94 sqm. Strata approx \$1322.61p/q, water \$171.96 p/q.

**Open for Inspection**

By Appointment.

**Listed By**



Jimmy Zhou  
 Phone: (02) 9599 8145  
 Mobile: 0410 325 888



Ci Song (Tim)  
 Phone: (02) 9599 8145  
 Mobile: 0410 263 338

