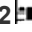




**351/18 Bonar St, Arncliffe, NSW 2205**

**\$700,000 - \$750,000**

Apartment   



## 2 STOREY 2 BEDROOM + MEDIA IN FUSION ARNCLIFFE

This property is on the boarder of Wolli Creek/Arncliffe. A rare opportunity to purchase this 2 storey 2 bedroom plus media apartment on first and second floor at FUSION complex, spacious floor plan with North West and South aspects. Features include 2 bedroom, 2 bathrooms, 1 balcony plus court yard, ensuite, all bedrooms have built-ins, open plan kitchen with caesar stone bench tops, gas cooking, dishwasher and stainless steel appliances, air-conditioning plus 1 security car space and storage. Complex offers indoor swimming pool, sauna and gym. Close to Arncliffe train station and local shops Internal + Balcony = approx.117 sqm, car space approx. 16 sqm, storage approx. 3 sqm, total area approx. 136 sqm. Strata approx \$1377.75 p/q, water \$171p/q and council \$320 p/q.

**Open for Inspection**

By Appointment.

### Listed By



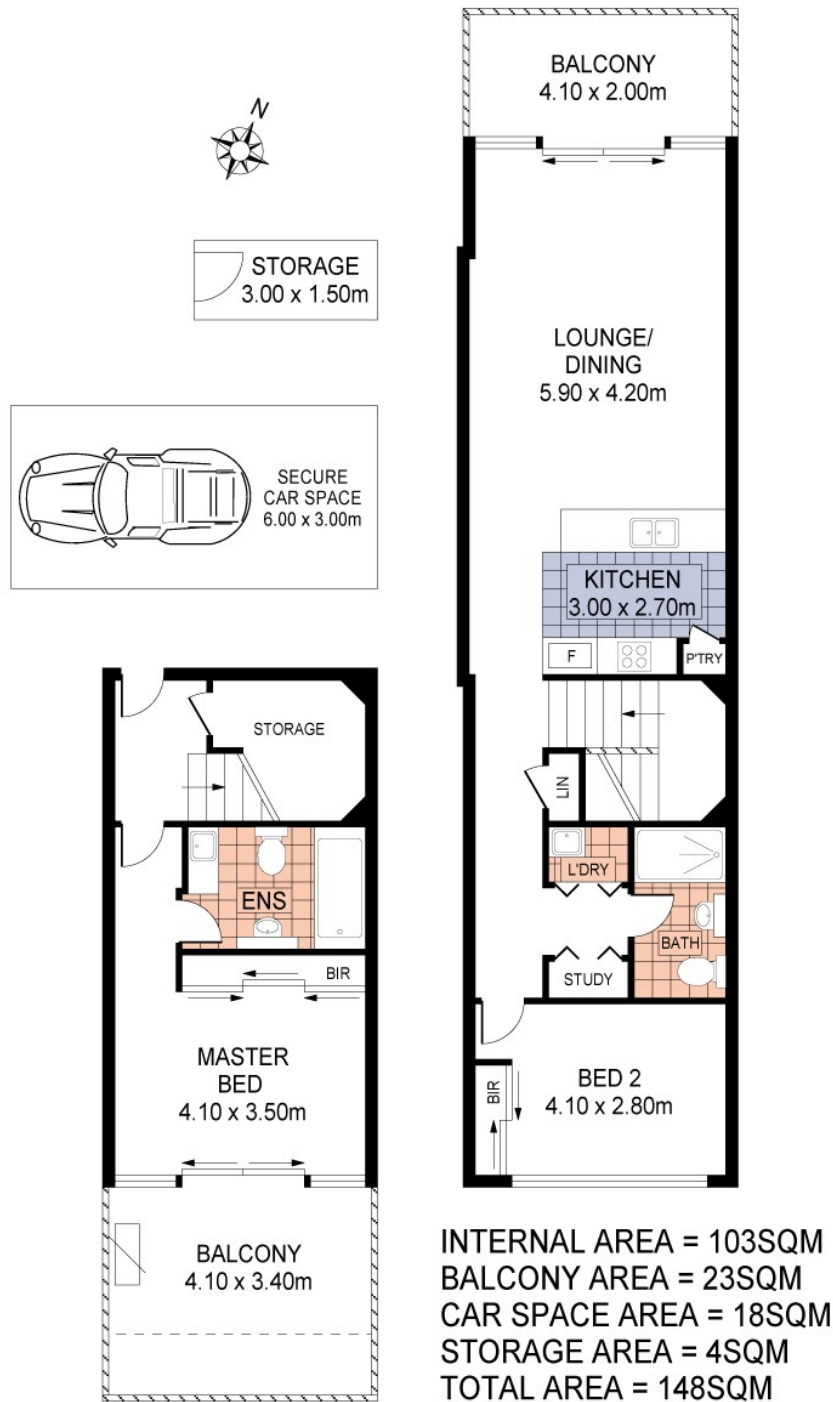
Jimmy Zhou  
 Phone: (02) 9599 8145  
 Mobile: 0410 325 888



Ci Song (Tim)  
 Phone: (02) 9599 8145  
 Mobile: 0410 263 338



Floorplan



351/3-5 LOFTUS ST, TURRELLA



Disclaimer; Please note that while the information contained in this floor plan is provided by reliable sources, we cannot guarantee its accuracy. It is intended as a guide only. Interested parties should rely on their own enquiry. Drawing not to scale. Dimensions are approximate.