

706/20 Brodie Spark Dr, Wolli Creek, NSW 2205

\$600,000 - \$630,000

Apartment 1  



BRIGHT 1 BEDROOM APARTMENT WITH NORTH FACING

This great architecturally designed north facing one bedroom apartment on level 7 at WATERVUE building with water views offering 1 bathroom, modern kitchen with ceasar stone bench tops, stainless steel appliances and gas cooking, air-conditioning, a spacious combined lounge and dining area. Complex includes pool, gym, community social rooms, BBQ facilities and access to Mt Olympus heritage gardens. Close to Wolli Creek train station, shops and Woolworth super market. Internal + Balcony = approx. 59 sqm, storage = approx. 1 sqm, Total area approx. 60 sqm. Strata approx. \$1015p/q , Council approx. \$309 p/q, Water approx. \$72.94 p/m.

Open for Inspection

By Appointment.

Listed By



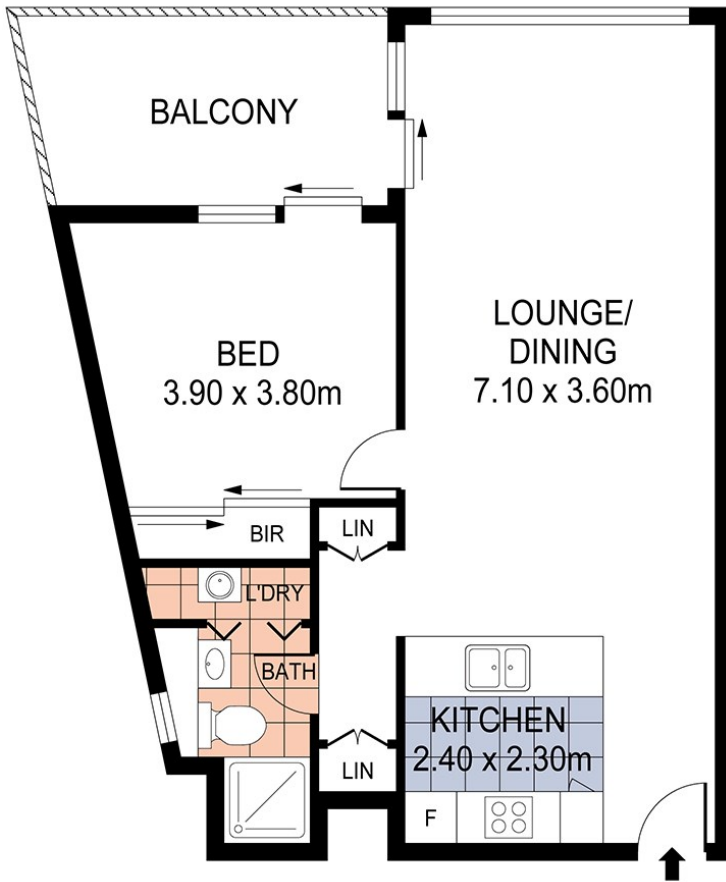
Jimmy Zhou
 Phone: (02) 9599 8145
 Mobile: 0410 325 888



Ci Song (Tim)
 Phone: (02) 9599 8145
 Mobile: 0410 263 338



Floorplan



STORAGE



INTERNAL AREA
 + = 59SQM
 BALCONY AREA
 STORAGE = 1SQM
 TOTAL AREA = 60SQM

706/20 BRODIE SPARK DR, WOLLI CREEK

Disclaimer; Please note that while the information contained in this floor plan is provided by reliable sources, we cannot guarantee its accuracy. It is intended as a guide only. Interested parties should rely on their own enquiry. Drawing not to scale. Dimensions are approximate.

